



WALDORF ASTORIA®  
RESIDENCES ▪ RAS AL KHAIMAH

والدورف أستوريا ريزيدنسز رأس الخيمة

## FLOOR PLAN

---

4 BED - PENTHOUSE

4 BEDROOM PENTHOUSE  
DUPLEX

TOTAL AREA  
316.0 SQ.M. / 3400.2 SQ.FT.

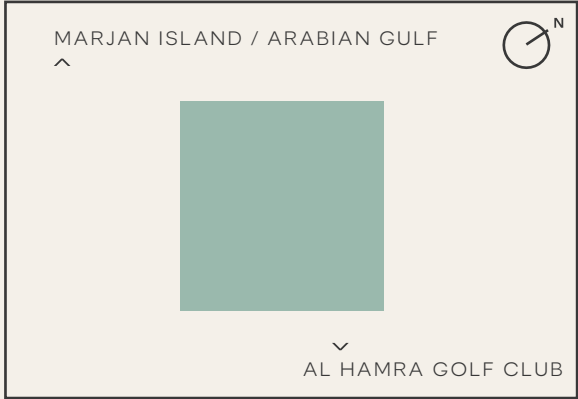
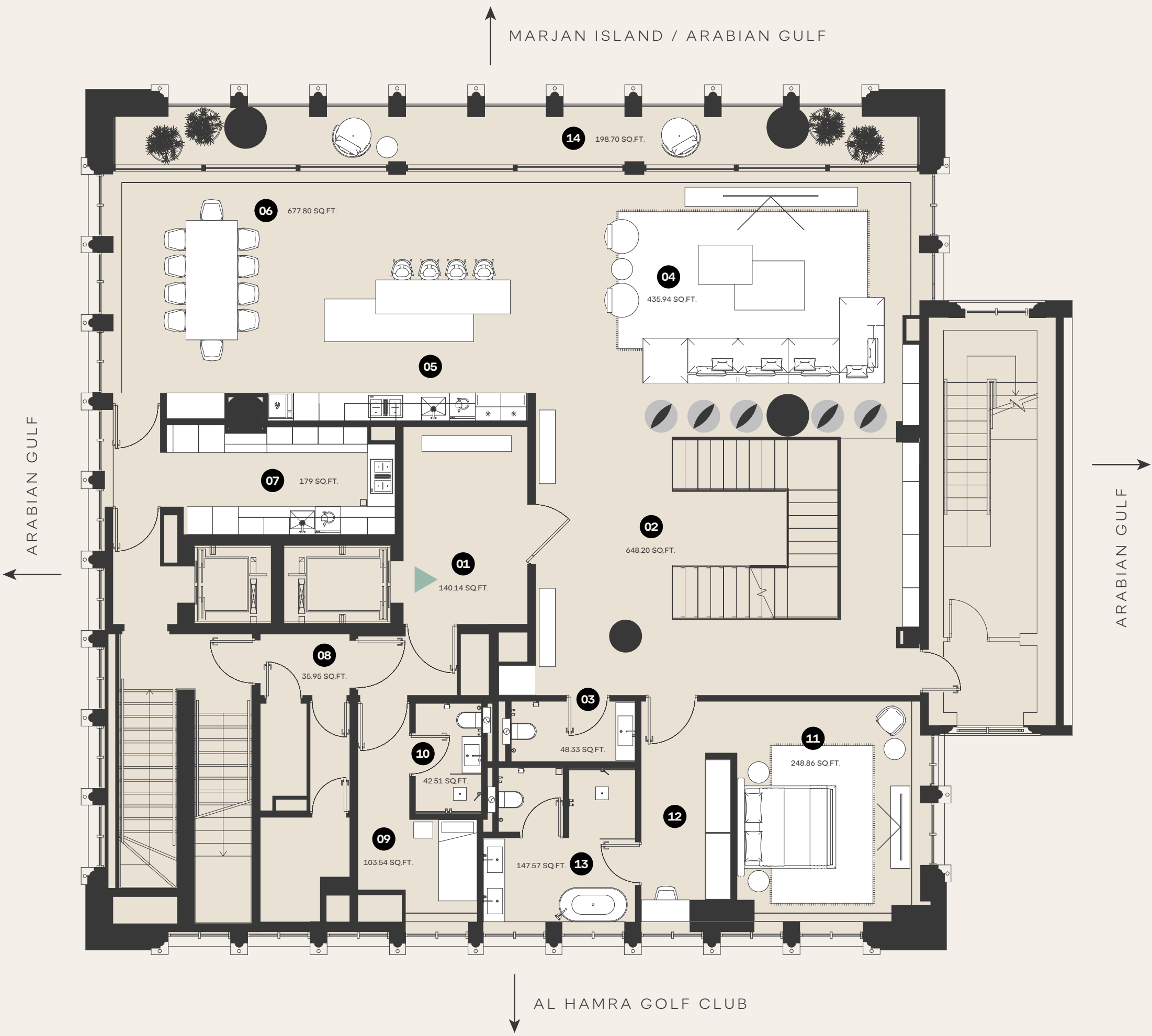
UNIT TYPE  
DUPLEX

VIEWS  
360 VIEWS

FLOORS  
19TH

EXPLICATION OF PREMISES

- 01 FOYER
- 02 HALL
- 03 POWDER ROOM
- 04 LIVING AREA
- 05 KITCHEN AREA / BREAKFAST COUNTER
- 06 DINING AREA
- 07 PREP KITCHEN
- 08 CORRIDOR
- 09 MAID'S BEDROOM
- 10 MAID'S BATHROOM
- 11 BEDROOM 1
- 12 BEDROOM 1 CLOSET
- 13 BATHROOM 1
- 14 TERRACE



NUMBER OF UNITS: 1  
STARTING PRICE: AED 50,000,000

ARTIST RENDERINGS: the artist representations and interior decorations, finishes, appliances and furnishings are provided for illustrative purposes only. The Developer makes no representations or warranties except as set forth in the sales agreement. Developer reserves the right to substitute materials, appliances, equipment, fixtures and other construction and design details specified herein with similar materials, appliances, equipment and/or fixtures of substantially equal or better quality. Developer reserves the right to make changes in accordance with the terms of the Offering Plan. The use of any designations, labels or nomenclature is for marketing purposes only.



# 4 BEDROOM PENTHOUSE DUPLEX

TOTAL AREA  
316.0 SQ.M. / 3400.2 SQ.FT.

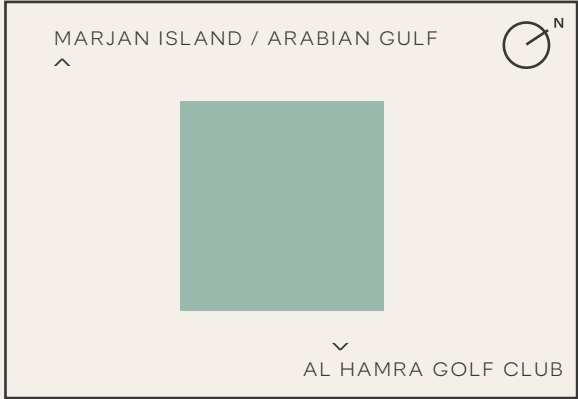
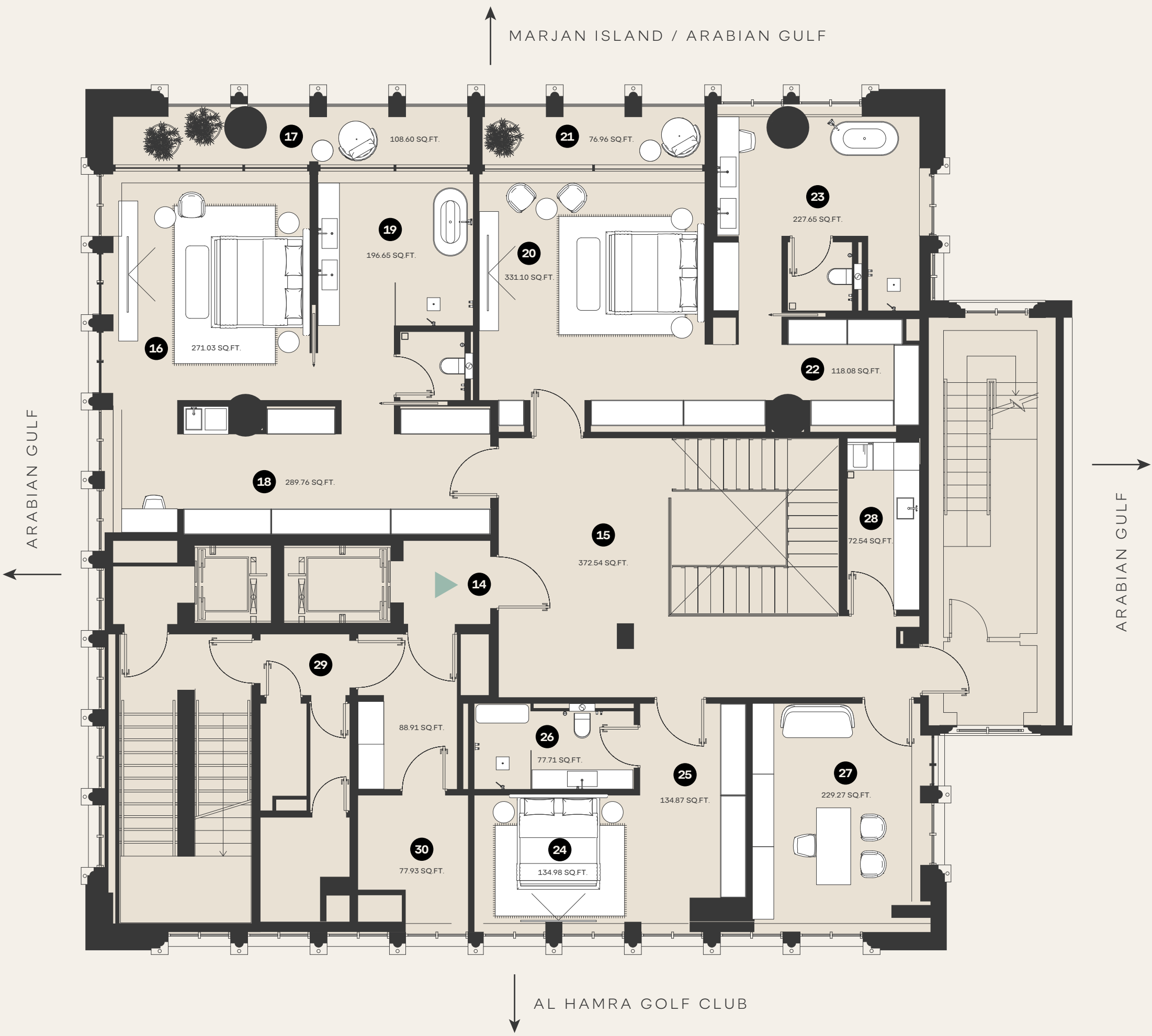
UNIT TYPE  
DUPLEX

VIEWS  
360 VIEWS

FLOORS  
20TH

EXPLICATION OF PREMISES

- 14 FOYER 2
- 15 HALL 2
- 16 MASTER BEDROOM
- 17 MASTER BEDROOM TERRACE
- 18 MASTER CLOSET
- 19 MASTER BATHROOM
- 20 BEDROOM 2
- 21 BEDROOM 2 TERRACE
- 22 CLOSET 2
- 23 BEDROOM 2 BATHROOM
- 24 BEDROOM 3
- 25 CLOSET 3
- 26 BEDROOM 3 BATHROOM
- 27 OFFICE
- 28 LAUNDRY
- 29 CORRIDOR
- 30 GSM ROOM



NUMBER OF UNITS: 1  
STARTING PRICE: AED 50,000,000

ARTIST RENDERINGS: the artist representations and interior decorations, finishes, appliances and furnishings are provided for illustrative purposes only. The Developer makes no representations or warranties except as set forth in the sales agreement. Developer reserves the right to substitute materials, appliances, equipment, fixtures and other construction and design details specified herein with similar materials, appliances, equipment and/or fixtures of substantially equal or better quality. Developer reserves the right to make changes in accordance with the terms of the Offering Plan. The use of any designations, labels or nomenclature is for marketing purposes only.

